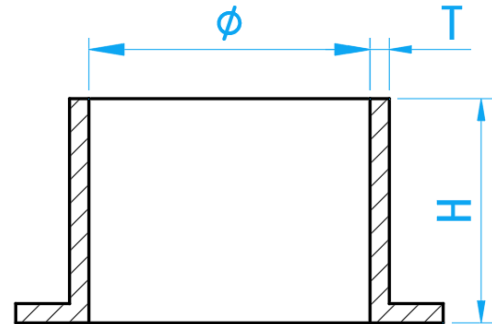


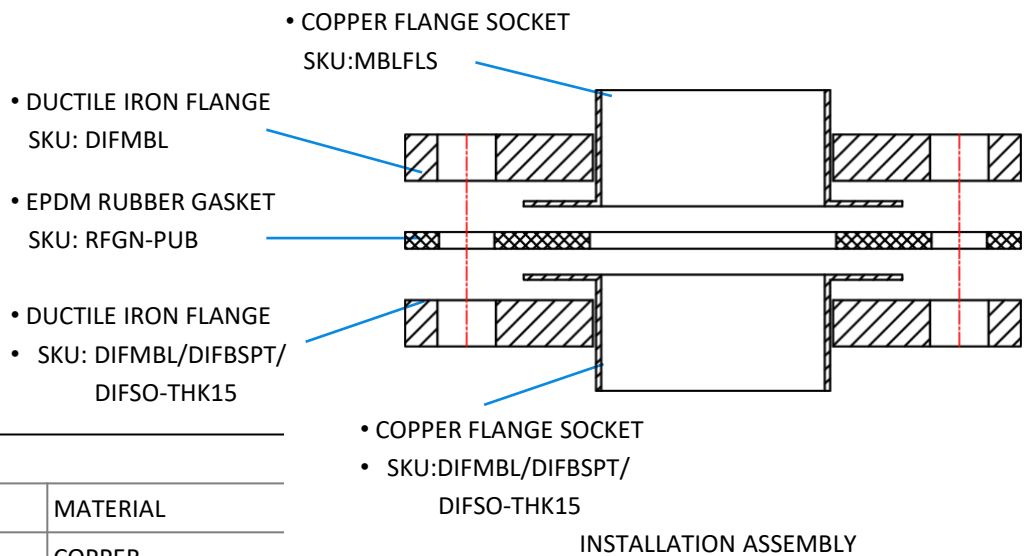
COPPER CAPILLARY FITTINGS FLANGE SOCKET (COMPOSITE FEMALE FLANGE PN16)



COMPLY WITH BS EN 1254-1



CROSS SECTIONAL VIEW


COMPONENT PARTS

PARTS	MATERIAL
FLANGE SOCKET	COPPER

DIMENSIONS

SKU	SIZE (mm)	H (mm)	T (mm)	WEIGHT (Kg)	PCS/CTN
MBLFLS020	22	17.0	0.9	0.040	100
MBLFLS025	28	19.5	0.9	0.045	100
MBLFLS035	35	23.0	1.0	0.045	170
MBLFLS042	42	28.0	1.1	0.056	170
MBLFLS050	54	28.5	1.4	0.146	75
MBLFLS065	67	35.0	1.7	0.175	40
MBLFLS080	76	36.0	1.7	0.259	30
MBLFLS100	108	50.0	2.1	0.545	12
MBLFLS150	159	50.0	2.7	1.527	4

 Note: The weight tolerance standard is $\pm 5\%$